

# DAYBREAK WOODS PHASE I

A PART OF SECTIONS 8 AND 9 OF THE JOHN BROWARD GRANT IN SECTION 37, TOWNSHIP 1 NORTH, RANGE 27 EAST, JACKSONVILLE, DUVAL COUNTY, FLORIDA

### CAPTION

A PART OF SECTIONS 8 AND 9 OF THE JOHN BROWARD GRANT IN SECTION 37, TOWNSHIP 1 NORTH, RANGE 27 EAST, DUVAL COUNTY, FLORIDA AND BEING MORE PARTICULARLY DESCRIBED AS FOLLOWS: FOR A POINT OF REFERENCE COMMENCE AT THE INTERSECTION OF THE WEST LINE OF SAID SECTION 8 WITH THE SOUTHERLY RIGHT OF WAY LINE OF NEW BERLIN ROAD (A 60 FOOT RIGHT OF WAY AS NOW ESTABLISHED), SAID RIGHT OF WAY LINE BEING A CURVE CONCAVE NORTHWESTERLY AND HAVING A RADIUS OF 2894.86 FEET; THENCE NORTHEASTERLY ALONG SAID RIGHT OF WAY LINE AND SAID CURVE, AN ARC DISTANCE OF 329.24 FEET AND BEING SUBTENDED BY A CHORD BEARING OF NORTH 55°24'05" EAST AND A CHORD DISTANCE OF 329.07 FEET TO A POINT ON SAID CURVE AND SAID POINT ALSO BEING THE POINT OF BEGINNING; THENCE CONTINUE NORTHEASTERLY ALONG SAID CURVE AND SAID RIGHT OF WAY LINE AN ARC DISTANCE OF 95.02 FEET AND BEING SUBTENDED BY A CHORD BEARING OF NORTH 51°12'10" EAST AND CHORD DISTANCE OF 95.01 FEET TO THE POINT OF TANGENCY OF SAID CURVE; THENCE NORTH 50°15'45" EAST, CONTINUING ALONG SAID RIGHT OF WAY LINE, A DISTANCE OF 85.00 FEET TO A POINT ON A CURVE CONCAVE EASTERLY AND HAVING A RADIUS OF 25.00 FEET; THENCE SOUTHERLY ALONG THE ARC OF SAID CURVE AN ARC DISTANCE OF 39.27 FEET AND BEING SUBTENDED BY A CHORD BEARING OF SOUTH 05°15'45" WEST AND A CHORD DISTANCE OF 35.36 FEET TO THE POINT OF TANGENCY OF SAID CURVE; THENCE SOUTH 39°44'15" EAST, A DISTANCE OF 62.64 FEET TO THE POINT OF CURVATURE OF A CURVE CONCAVE NORTHEASTERLY AND HAVING A RADIUS OF 25.00 FEET; THENCE SOUTHEASTERLY ALONG THE ARC OF SAID CURVE, AN ARC DISTANCE OF 38.82 FEET AND BEING SUBTENDED BY A CHORD BEARING OF SOUTH 84°13'30" EAST AND A CHORD DISTANCE OF 35.04 FEET; THENCE SOUTH 39°20'27" EAST, A DISTANCE OF 50.00 FEET; THENCE NORTH 51°17'16" EAST, A DISTANCE OF 40.01 FEET; THENCE SOUTH 38°42'44" EAST, A DISTANCE OF 101.89 FEET; THENCE NORTH 51°17'16" EAST, A DISTANCE OF 180.00 FEET; THENCE NORTH 55°01'42" EAST, A DISTANCE OF 60.17 FEET; THENCE NORTH 61°11'37" EAST, A DISTANCE OF 21.05 FEET; THENCE NORTH 65°46'39" EAST, A DISTANCE OF 38.93 FEET; THENCE NORTH 71°52'43" EAST, A DISTANCE OF 61.20 FEET; THENCE NORTH 84°25'16" EAST, A DISTANCE OF 63.52 FEET; THENCE SOUTH 89°44'33" EAST, A DISTANCE OF 67.23 FEET; THENCE SOUTH 87°35'27" EAST, A DISTANCE OF 36.90 FEET; THENCE SOUTH 81°09'53" EAST, A DISTANCE OF 39.43 FEET; THENCE SOUTH 81°32'42" EAST, A DISTANCE OF 79.40 FEET; THENCE NORTH 85°17'02" EAST, A DISTANCE OF 301.56 FEET; THENCE SOUTH 00°38'57" EAST, A DISTANCE OF 374.04 FEET; THENCE NORTH 87°51'43" WEST, A DISTANCE OF 372.86 FEET; THENCE SOUTH 42°40'49" WEST, A DISTANCE OF 131.27 FEET; THENCE SOUTH 62°12'38" WEST, A DISTANCE OF 166.38 FEET; THENCE SOUTH 27°26'45" EAST, A DISTANCE OF 33.02 FEET; THENCE SOUTH 18°57'58" EAST, A DISTANCE OF 159.32 FEET; THENCE NORTH 71°02'02" EAST, A DISTANCE OF 19.12 FEET; THENCE SOUTH 18°57'58" EAST, A DISTANCE OF 218.56 FEET; THENCE SOUTH 61°31'31" WEST, A DISTANCE OF 26.69 FEET; THENCE SOUTH 04°15'19" EAST, A DISTANCE OF 77.55 FEET; THENCE SOUTH 27°46'55" EAST, A DISTANCE OF 69.99 FEET; THENCE SOUTH 01°05'38" EAST, A DISTANCE OF 30.83 FEET; THENCE SOUTH 19°31'58" EAST, A DISTANCE OF 82.17 FEET; THENCE SOUTH 01°50'56" EAST, A DISTANCE OF 89.83 FEET; THENCE SOUTH 22°04'23" EAST, A DISTANCE OF 89.14 FEET; THENCE SOUTH 12°15'08" EAST, A DISTANCE OF 59.00 FEET; THENCE SOUTH 41°35'24" EAST, A DISTANCE OF 62.38 FEET; THENCE SOUTH 30°42'34" EAST, A DISTANCE OF 66.31 FEET; THENCE NORTH 74°35'48" EAST, A DISTANCE OF 50.27 FEET; THENCE SOUTH 62°22'31" EAST, A DISTANCE OF 20.95 FEET; THENCE SOUTH 44°57'49" EAST, A DISTANCE OF 31.29 FEET; THENCE SOUTH 57°55'37" WEST, A DISTANCE OF 35.61 FEET; THENCE SOUTH 04°31'36" WEST, A DISTANCE OF 98.85 FEET; THENCE SOUTH 11°30'23" EAST, A DISTANCE OF 63.50 FEET; THENCE SOUTH 79°07'40" EAST, A DISTANCE OF 37.81 FEET; THENCE SOUTH 42°40'31" EAST, A DISTANCE OF 27.98 FEET; THENCE SOUTH 42°25'51" EAST, A DISTANCE OF 67.94 FEET; THENCE SOUTH 01°08'27" WEST, A DISTANCE OF 62.16 FEET; THENCE SOUTH 44°55'53" EAST, A DISTANCE OF 85.79 FEET; THENCE SOUTH 69°39'40" EAST, A DISTANCE OF 32.65 FEET; THENCE SOUTH 50°37'20" EAST, A DISTANCE OF 61.74 FEET; THENCE SOUTH 00°38'57" EAST, A DISTANCE OF 936.85 FEET TO A POINT ON A CURVE CONCAVE NORTHWESTERLY AND HAVING A RADIUS OF 76.00 FEET; THENCE SOUTHWESTERLY ALONG THE ARC OF SAID CURVE, AN ARC DISTANCE OF 108.23 FEET AND BEING SUBTENDED BY A CHORD BEARING OF SOUTH 78°00'41" WEST AND A CHORD DISTANCE OF 99.31 FEET TO A CURVE CONCAVE NORTHEASTERLY AND HAVING A RADIUS OF 441.42 FEET; THENCE NORTHWESTERLY ALONG THE ARC OF SAID CURVE, AN ARC DISTANCE OF 130.21 FEET AND BEING SUBTENDED BY A CHORD BEARING OF NORTH 54°43'59" WEST AND A CHORD DISTANCE OF 129.73 FEET; THENCE NORTH 41°04'03" WEST, A DISTANCE OF 78.48 FEET; THENCE NORTH 02°20'21" WEST, A DISTANCE OF 59.75 FEET; THENCE NORTH 45°40'34" WEST, A DISTANCE OF 48.54 FEET; THENCE SOUTH 83°51'30" WEST, A DISTANCE OF 36.71 FEET; THENCE SOUTH 37°59'41" WEST, A DISTANCE OF 81.13 FEET; THENCE NORTH 52°00'19" WEST, A DISTANCE OF 45.00 FEET; THENCE NORTH 37°59'41" WEST, A DISTANCE OF 35.80 FEET; THENCE NORTH 01°04'11" WEST, A DISTANCE OF 171.10 FEET; THENCE NORTH 19°38'06" EAST, A DISTANCE OF 26.70 FEET; THENCE NORTH 08°03'26" WEST, A DISTANCE OF 66.85 FEET; THENCE NORTH 07°50'25" WEST, A DISTANCE OF 83.53 FEET; THENCE NORTH 07°02'15" WEST, A DISTANCE OF 244.97 FEET; THENCE NORTH 03°18'20" EAST, A DISTANCE OF 60.85 FEET; THENCE NORTH 09°34'56" WEST, A DISTANCE OF 147.26 FEET; THENCE SOUTH 24°42'42" WEST, A DISTANCE OF 24.89 FEET; THENCE NORTH 27°33'01" WEST, A DISTANCE OF 324.13 FEET; THENCE NORTH 23°23'42" WEST, A DISTANCE OF 244.97 FEET; THENCE NORTH 09°47'57" WEST, A DISTANCE OF 183.80 FEET; THENCE NORTH 31°04'01" EAST, A DISTANCE OF 90.61 FEET; THENCE NORTH 13°10'31" WEST, A DISTANCE OF 249.29 FEET TO A CURVE CONCAVE SOUTHEASTERLY AND HAVING A RADIUS OF 330.00 FEET; THENCE NORTHEASTERLY ALONG THE ARC OF SAID CURVE AN ARC DISTANCE OF 67.39 FEET AND BEING SUBTENDED BY A CHORD BEARING OF NORTH 48°46'30" EAST, AND A CHORD DISTANCE OF 67.38 FEET; THENCE NORTH 39°25'45" WEST, A DISTANCE OF 150.00 FEET; THENCE NORTH 50°40'54" EAST, A DISTANCE OF 4.74 FEET; THENCE NORTH 39°50'00" WEST, A DISTANCE OF 249.29 FEET; THENCE SOUTH 49°57'29" WEST, A DISTANCE OF 10.01 FEET; THENCE NORTH 42°35'55" WEST, A DISTANCE OF 100.08 FEET; THENCE NORTH 39°38'10" WEST, A DISTANCE OF 50.00 FEET; THENCE NORTH 39°44'15" WEST, A DISTANCE OF 113.14 FEET TO THE POINT OF BEGINNING. CONTAINING 29.81 ACRES, MORE OR LESS.

### ADOPTION AND DEDICATION

THIS IS TO CERTIFY THAT M.L. PROPERTIES L.L.C., A FLORIDA CORPORATION IS THE LAWFUL OWNER OF THE LANDS DESCRIBED IN THE CAPTION HEREON, KNOWN AS DAYBREAK WOODS PHASE I, HAS CAUSED THESE PRESENTS TO BE SURVEYED AND SUBDIVIDED, AND THAT THIS PLAT WAS MADE IN ACCORDANCE WITH SAID SURVEY IS HEREBY ADOPTED AS THE TRUE AND CORRECT PLAT OF SAID LANDS. ALL ROAD RIGHT-OF-WAYS AND DRAINAGE EASEMENTS DESIGNATED ON THIS PLAT, ARE HEREBY IRREVOCABLY AND WITHOUT RESERVATIONS DEDICATED TO THE CITY OF JACKSONVILLE, ITS SUCCESSORS AND ASSIGNS. ALL UTILITY EASEMENTS, TOGETHER WITH AN EASEMENT FOR WATER AND SEWER AND ELECTRIC OVER ALL STREET RIGHT-OF-WAYS, AS DESIGNATED ON THIS PLAT, ARE HEREBY IRREVOCABLY AND WITHOUT RESERVATIONS DEDICATED TO THE JEA, ITS SUCCESSORS AND ASSIGNS, FOR THE INSTALLATION AND MAINTENANCE OF WATER AND/OR SEWER LINES. THE UNDERSIGNED OWNERS DO HEREBY GRANT TO DAYBREAK WOODS HOMEOWNERS ASSOCIATION OF JACKSONVILLE, INC., A NON-EXCLUSIVE AND PERPETUAL EASEMENT FOR MAINTENANCE OF ALL LAKE/STORMWATER MANAGEMENT FACILITIES AND ALL ACCESS EASEMENTS ADJOINING SUCH LAKE/STORMWATER MANAGEMENT FACILITIES AS DESIGNATED ON THIS PLAT. TRACT A SHALL REMAIN PRIVATELY OWNED AND CONVEYED TO DAYBREAK WOODS HOMEOWNERS ASSOCIATION OF JACKSONVILLE, INC., OR ANOTHER RESPONSIBLE HOMEOWNERS ASSOCIATION OR RECREATION ASSOCIATION. TITLE TO TRACT B (LIFT STATION SITE) IS HEREBY CONVEYED TO JEA, ITS SUCCESSORS AND ASSIGNS, FOR ITS EXCLUSIVE USE. THE UNDERSIGNED OWNERS DO HEREBY GRANT TO PRESENT AND FUTURE OWNERS OF THE PARCELS SHOWN ON THIS PLAT AND THEIR GUESTS, INVITEES AND DOMESTIC HELP, AND TO DELIVERY, PICKUP, AND FIRE PROTECTION SERVICES, UTILITY COMPANIES, CABLE TELEVISION COMPANIES POLICE, TO SERVE THE LAND SHOWN ON THIS PLAT. HOLDERS OF MORTGAGE LIENS ON SUCH LANDS, AND OTHER SUCH PERSONS AS THE UNDERSIGNED MAY FROM TIME TO TIME DESIGNATE, THE NON-EXCLUSIVE AND PERPETUAL RIGHTS OF INGRESS AND EGRESS AND USE OVER AND ACROSS AND IN ALL PARCELS AND EASEMENTS, REGARDLESS OF THE PROCEEDING PROVISIONS, THE UNDERSIGNED OWNER RESERVES AND SHALL HAVE THE UNRESTRICTED RIGHT TO DENY ANY INGRESS TO ANY PART OF THE LANDS SHOWN ON THIS PLAT. THE PUBLIC DRAINAGE EASEMENTS, THROUGH AND OVER THE LAKES AND FILTRATION SYSTEMS SHOWN ON THIS PLAT ARE HEREBY IRREVOCABLY DEDICATED TO THE CITY OF JACKSONVILLE, ITS SUCCESSORS AND ASSIGNS, AND ARE SUBJECT TO THE FOLLOWING CONVEYANCE WHICH SHALL RUN IN WITH THE LAND: (1) THE PUBLIC DRAINAGE EASEMENTS HEREBY DEDICATED SHALL PERMIT THE CITY OF JACKSONVILLE, ITS SUCCESSORS AND ASSIGNS DISCHARGE INTO SAID LAKES AND FILTRATION SYSTEMS, WHICH THESE EASEMENTS TRAVERSE, ALL WATER WHICH MAY FALL OR COME UPON ALL STREET RIGHT-OF-WAYS HEREBY DEDICATED, TOGETHER WITH ALL SOIL NUTRIENTS, CHEMICALS, AND ALL OTHER SUBSTANCES WHICH MAY FLOW OR PASS FROM SAID RIGHT-OF-WAYS, FROM ADJACENT LAND, OR FROM ANY OTHER SOURCE OF PUBLIC WATERS INTO OR THROUGH SAID LAKES AND FILTRATION SYSTEMS WITHOUT ANY LIABILITY WHATSOEVER ON THE PLAT OF THE CITY OF JACKSONVILLE, ITS SUCCESSORS AND ASSIGNS, FOR ANY DAMAGE, INJURIES OR LOSSES TO PERSONS OR PROPERTY RESULTING FROM THE ACCEPTANCE OR USE OF THESE DRAINAGE EASEMENTS BY THE CITY OF JACKSONVILLE, ITS SUCCESSORS, AND ASSIGNS; (2) THE LAKES AND FILTRATION SYSTEMS SHOWN ON THIS PLAT ARE OWNED IN FEE BY SIMPLE TITLE BY ABUTTING PROPERTY OWNERS. THE CITY OF JACKSONVILLE, BY ACCEPTANCE OF THIS PLAT, ASSUMES NO RESPONSIBILITY FOR THE REMOVAL OR TREATMENT OF AQUATIC PLANTS, ANIMALS, SOIL, CHEMICALS, OR ANY OTHER SUBSTANCE OR THING THAT MAY EVEN BE OR COME WITHIN SAID LAKES AND FILTRATION SYSTEMS, WHICH THESE EASEMENTS TRAVERSE, NOR ANY RESPONSIBILITY FOR THE MAINTENANCE OR PRESERVATION OF THE WATER PURITY, WATER LEVEL, OR WATER DEPTH, WHICH RESPONSIBILITIES SHALL BE THOSE OF THE DAYBREAK WOODS HOMEOWNERS ASSOCIATION OF JACKSONVILLE, INC.; (3) THE CITY OF JACKSONVILLE, ITS SUCCESSORS AND ASSIGNS, SHALL NOT BE LIABLE NOR RESPONSIBLE FOR THE CREATION, OPERATION, FAILURE, OR DESTRUCTION OF WATER LEVEL CONTROL EQUIPMENT WHICH MAY BE CONSTRUCTED OR INSTALLED BY THE DEVELOPERS OR ANY PERSON WITHIN THE AREA OF THE LANDS HEREBY PLATTED, OR OF THE LAKES AND FILTRATION SYSTEMS SHOWN ON THIS PLAT, BUT SHALL HAVE THE RIGHT TO MODIFY THE EXISTENCE OF THE LAKES AND FILTRATION SYSTEMS, AND THAT WHICH RETAINS IT, TO AFFECT ADEQUATE DRAINAGE INCLUDING BUT NOT LIMITED TO, THE RIGHT TO REMOVE ANY WATER LEVEL CONTROL STRUCTURES OR ANY PART THEREOF, IN ACCORDANCE WITH THE REQUIREMENTS OF THE ST. JOHNS RIVER WATER MANAGEMENT DISTRICT. THE UNDERSIGNED OWNER AND/OR DEVELOPER OF THE LANDS DESCRIBED AND CAPTIONED HEREIN, SHALL INDEMNIFY THE CITY OF JACKSONVILLE AND SAVE IT HARMLESS FROM SUITS, ACTIONS, DAMAGES AND LIABILITY AND EXPENSE IN CONNECTION WITH LOSS OF LIFE, BODILY OR PERSONAL INJURY, OR PREPAY DAMAGE OR ANY OTHER DAMAGE ARISING FROM, OR OUT OF ANY OCCURRENCE IN, UPON, AT, OR ACT OF OMISSION OF THE UNDERSIGNED OWNER, THEIR AGENTS, CONTRACTORS, EMPLOYEES, SERVANTS, LICENSEES, OR CONCESSIONAIRES WITHIN THE LANDS DESCRIBED AND CAPTIONED HEREIN. THIS INDEMNIFICATION SHALL RUN WITH THE LAND AND THE ASSIGNED OF THE UNDERSIGNED OWNERS, AND SHALL BE SUBJECT TO IT. THOSE EASEMENTS DESIGNATED AS "JEA E.E." ARE HEREBY IRREVOCABLY DEDICATED TO JEA, ITS SUCCESSORS AND ASSIGNS, FOR ITS EXCLUSIVE USE IN CONJUNCTION WITH ITS UNDERGROUND ELECTRICAL SYSTEM. THOSE EASEMENTS DESIGNATED AS "M.L.P. E.E." ARE HEREBY IRREVOCABLY DEDICATED TO M.L.P. PROPERTIES L.L.C., ITS SUCCESSORS AND ASSIGNS, FOR ITS NON-EXCLUSIVE USE IN CONJUNCTION WITH ITS UNDERGROUND ELECTRICAL SYSTEM, PROVIDED HOWEVER, THAT NO PARALLEL UTILITIES MAY BE INSTALLED WITHIN SAID EASEMENTS.

Approved 4/26/2002  
Date  
At Hall  
City Engineer  
for Director of Public Works  
Approved 5-2-2002  
Date  
Quene M. Nelson  
for General Counsel

IN WITNESS WHEREOF, M.L. PROPERTIES L.L.C., A FLORIDA CORPORATION, HAS CAUSED THESE PRESENTS TO BE SIGNED THIS 2nd DAY OF Nov A.D., 2001.

Frank Blazeovich  
FRANK BLAZEVOICH, PRESIDENT OF M.L. PROPERTIES L.L.C., A FLORIDA CORPORATION

WITNESS  
[Signature]  
WITNESS  
CORPORATE SEAL  
5/22/2002  
MY COMMISSION EXPIRES  
CC 7208061  
COMMISSION NUMBER

### STATE OF FLORIDA, COUNTY OF DUVAL

THE FOREGOING ADOPTION AND DEDICATION WAS ACKNOWLEDGED BEFORE ME THIS 2nd DAY OF November A.D., 2001 BY Frank Blazeovich TO ME WELL KNOWN AND NO OATH WAS ADMINISTERED.

James T. Pearce  
NOTARY PUBLIC, STATE OF FLORIDA AT LARGE  
James T. Pearce  
NOTARY (PLEASE PRINT)

NOTARY PUBLIC - STATE OF FLORIDA  
JAMES T. PEARCE  
COMMISSION # CC7208061  
EXPIRES 05/22/02  
BONDED THRU ABA 1-600-NOTARY

### DEDICATION FOR MORTGAGEE

THIS IS TO CERTIFY THAT FIRST NATIONAL BANK, BEING THE MORTGAGEE OF THE LANDS DESCRIBED IN THE FORGOING CAPTION OF THIS PLAT, DOES HEREBY JOIN IN AND MAKE ITSELF A PARTY FOR THE DEDICATION OF SAID LANDS AND PLAT FOR THE USES AND PURPOSES THEREIN EXPRESSED.

IN WITNESS WHEREOF, FIRST NATIONAL BANK, A BANKING CORPORATION, HAS CAUSED THESE PRESENTS TO BE SIGNED BY ITS VICE PRESIDENT BY AND WITH THE AUTHORITY OF ITS BOARD OF DIRECTORS IN ITS NAME AND WITH ITS CORPORATE SEAL THIS 8th DAY OF November A.D., 2001.

Robert K. Beatty  
ROBERT K. BEATTY  
SENIOR VICE PRESIDENT (BANK SEAL)

WITNESS  
Carol M. Wright  
WITNESS  
[Signature]  
WITNESS

### STATE OF FLORIDA, COUNTY OF DUVAL

THE FOREGOING INSTRUMENT WAS ACKNOWLEDGED BEFORE ME THIS 8th DAY OF November A.D., 2001 BY ROBERT K. BEATTY, SENIOR VICE PRESIDENT OF FIRST NATIONAL BANK, A BANKING CORPORATION, PERSONALLY KNOWN TO ME AND NO OATH WAS TAKEN.

James T. Pearce  
NOTARY PUBLIC, STATE OF FLORIDA AT LARGE  
James T. Pearce  
NOTARY (PLEASE PRINT)

5-22-2002  
MY COMMISSION EXPIRES  
CC 7208061  
COMMISSION NUMBER

NOTARY PUBLIC - STATE OF FLORIDA  
JAMES T. PEARCE  
COMMISSION # CC7208061  
EXPIRES 05/22/02  
BONDED THRU ABA 1-600-NOTARY

# DAYBREAK WOODS PHASE 1

A PART OF SECTIONS 8 AND 9 OF THE JOHN BROWARD GRANT IN SECTION 37, TOWNSHIP 1 NORTH, RANGE 27 EAST, JACKSONVILLE, DUVAL COUNTY, FLORIDA

PLAT BOOK 55 PAGE 16A  
SHEET 2 OF 6 SHEETS

**STATE OF FLORIDA, COUNTY OF DUVAL**

THE FOREGOING INSTRUMENT WAS ACKNOWLEDGED BEFORE ME THIS 2nd DAY OF November A.D., 2001 BY FRANK BLAZEVICH, PRESIDENT OF M.L. PROPERTIES L.L.C., A FLORIDA CORPORATION, PERSONALLY KNOWN TO ME AND NO OATH WAS TAKEN.

James T. Pearce  
NOTARY PUBLIC, STATE OF FLORIDA AT LARGE

05/22/2002  
MY COMMISSION EXPIRES

James T. Pearce  
NOTARY (PLEASE PRINT)

NOTARY PUBLIC - STATE OF FLORIDA  
JAMES T. PEARCE  
COMMISSION # CC765051  
EXPIRES 5/22/2003  
BONDED THRU ASA 1-688-NOTARY

CC 72080061  
COMMISSION NUMBER

**APPROVED FOR RECORD**

THIS IS TO CERTIFY THAT THE ABOVE PLAT HAS BEEN EXAMINED, ACCEPTED AND APPROVED BY THE CITY OF JACKSONVILLE, DUVAL COUNTY, FLORIDA, PURSUANT TO CHAPTER NO. 654, ORDINANCE CODE.

Ann Wentworth  
DIRECTOR OF PUBLIC WORKS

5-2-02  
DATE

**CLERK'S CERTIFICATE # 2002124714**

THIS IS TO CERTIFY THAT THIS PLAT HAS BEEN APPROVED BY THE CITY OF JACKSONVILLE, FLORIDA AND SUBMITTED TO ME FOR THE RECORDING, AND IS RECORDED IN PLAT BOOK 55 PAGES 16, 16A, 16B, 16C, 16D, 16E OF THE CURRENT PUBLIC RECORDS OF DUVAL COUNTY, FLORIDA THIS 6th DAY OF May A.D., 2001.

Jim Fuller  
JIM FULLER, CLERK OF THE CIRCUIT COURT

[Signature]  
DEPUTY CLERK

**PLAT CONFORMITY REVIEW**

THIS PLAT HAS BEEN REVIEWED AND FOUND IN COMPLIANCE WITH PART 1, CHAPTER 177, FLORIDA STATUTES, THIS 26th DAY OF April A.D., 2001.

Glenn E. McGregor  
GLENN E. MCGREGOR, PLS  
PROFESSIONAL LAND SURVEYOR NUMBER 4252

**SURVEYOR'S CERTIFICATE**

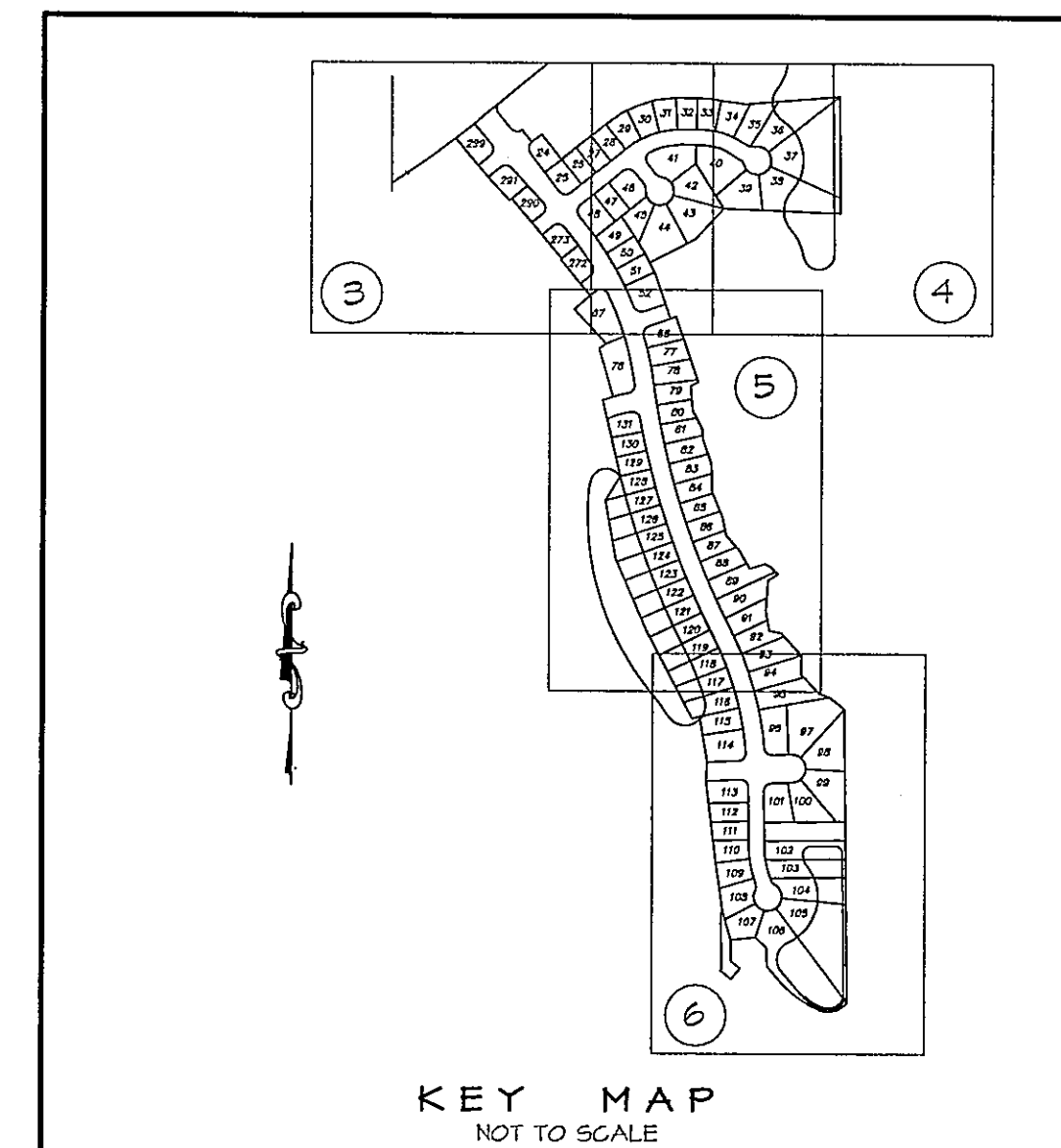
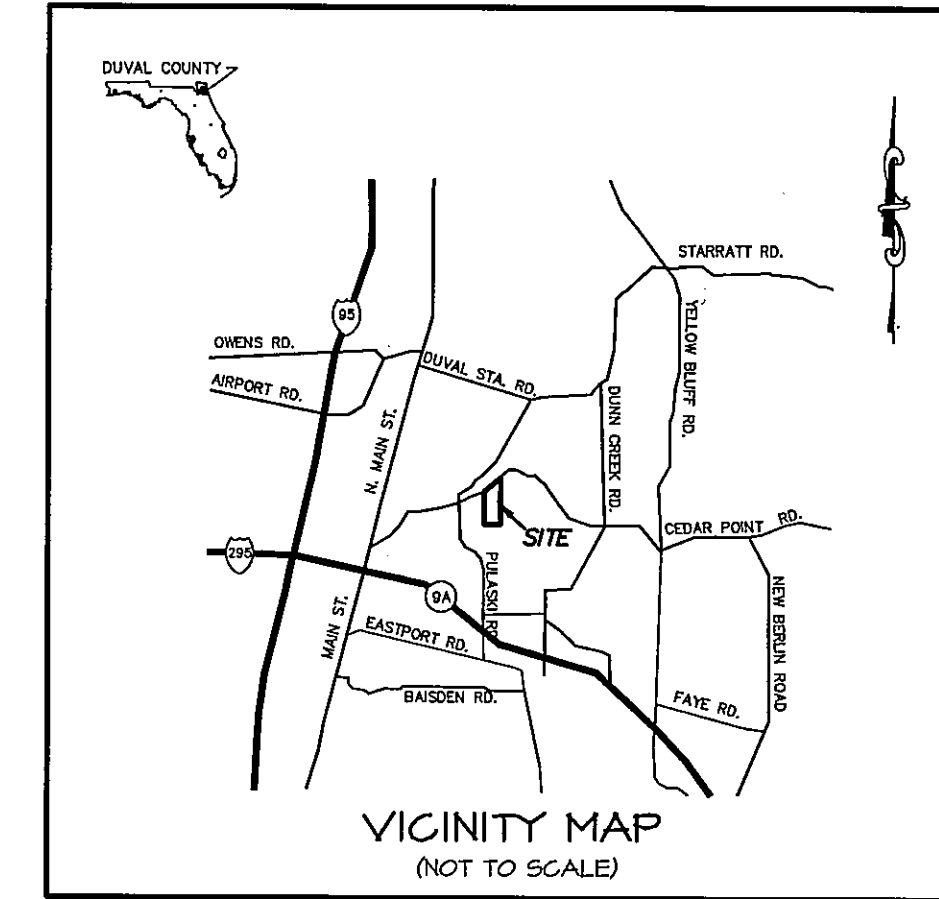
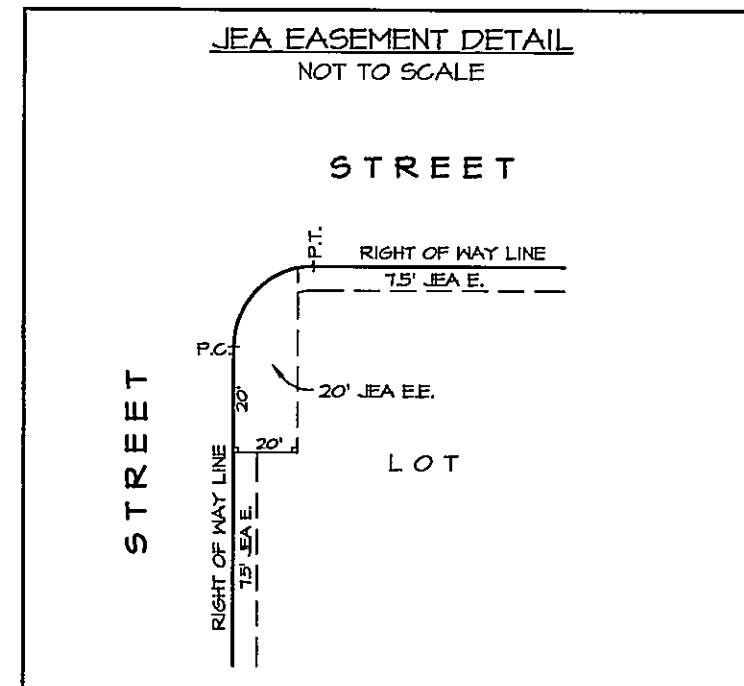
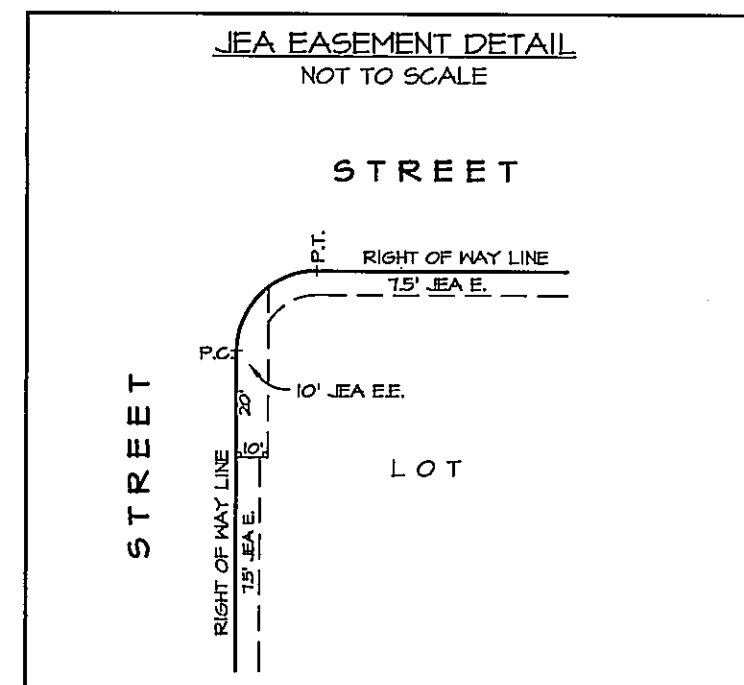
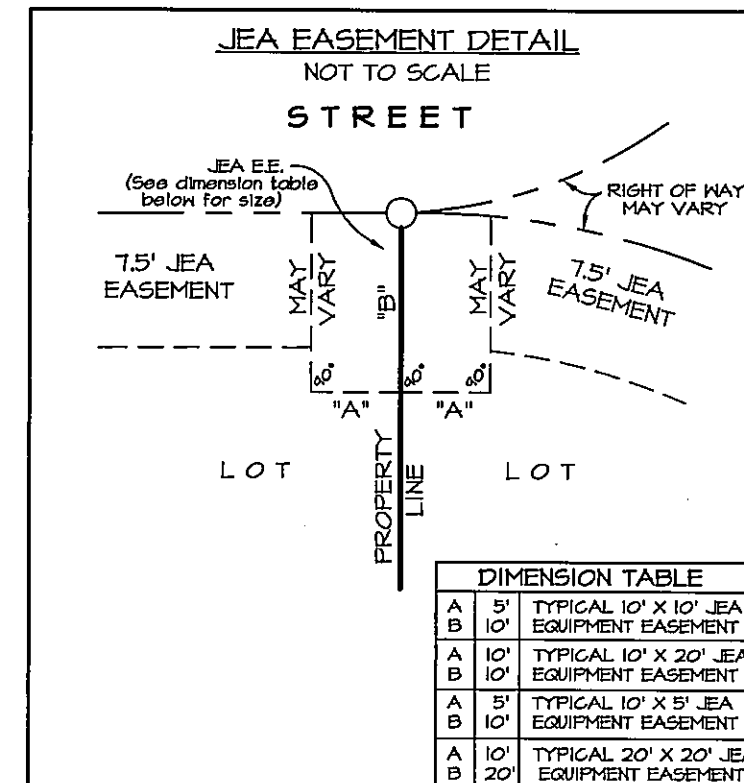
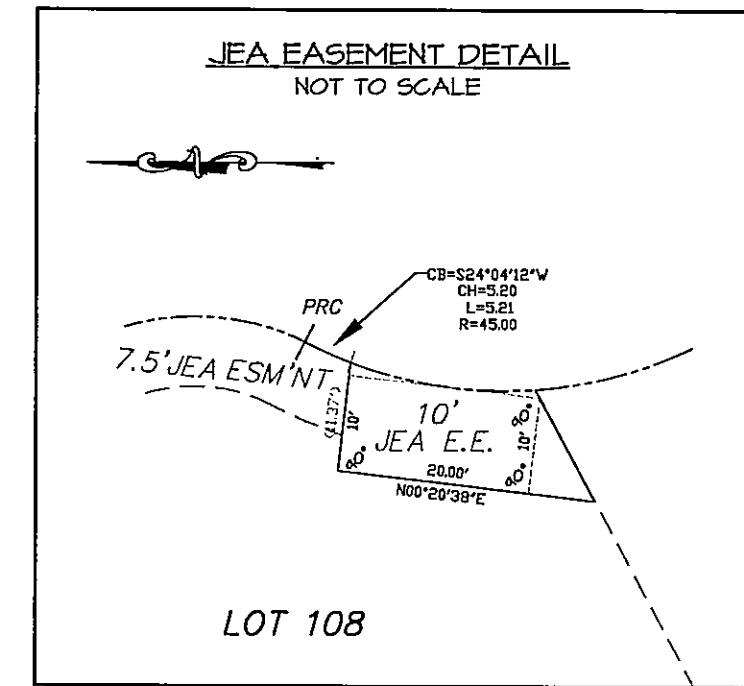
THIS IS TO CERTIFY THAT THE ABOVE PLAT IS A TRUE AND CORRECT REPRESENTATION OF THE LANDS DESCRIBED IN THE CAPTION, THAT THE SURVEY WAS MADE UNDER MY RESPONSIBLE DIRECTION AND SUPERVISION, THAT THE SURVEY DATA COMPLIES WITH ALL OF THE REQUIREMENTS OF FLORIDA STATUTE 177, THAT THE SURVEY AND LEGAL DESCRIPTION ARE ACCURATE AND THAT THE PERMANENT REFERENCE MONUMENTS HAVE BEEN PLACED ACCORDING TO THE LAWS OF THE STATE OF FLORIDA AND THE CITY OF JACKSONVILLE, FLORIDA.

SIGNED AND SEALED THIS 20th DAY OF October A.D., 2001.

Charles R. Bassett  
CHARLES R. BASSETT  
FLORIDA REGISTERED LAND SURVEYOR, NO. 1576

**GENERAL NOTES**

- BEARINGS SHOWN HEREON ARE BASED ON THE SOUTHERLY RIGHT-OF-WAY LINE OF NEW BERLIN ROAD AS BEING NORTH 50°15'45" EAST.
- THE EASEMENTS SHOWN HEREON AND DESIGNATED AS UNOBSTRUCTED EASEMENTS SHALL REMAIN TOTALLY UNOBSTRUCTED BY ANY PERMANENT IMPROVEMENTS WHICH MAY IMPEDE THE USE OF SAID EASEMENT BY THE CITY OF JACKSONVILLE. THE CONSTRUCTION OF DRIVEWAYS AND THE INSTALLATION OF FENCES, HEDGES AND LANDSCAPING IS PERMISSIBLE BUT SUBJECT TO REMOVAL BY THE CITY AT THE EXPENSE OF EACH LOT OWNER FOR THE REMOVAL AND/OR REPLACEMENT OF SUCH ITEMS.
- NOTICE: THIS PLAT, AS RECORDED IN ITS GRAPHIC FORM, IS THE OFFICIAL DEPICTION OF THE SUBDIVIDED LANDS DESCRIBED HEREIN AND WILL IN NO CIRCUMSTANCES BE SUPPLANTED IN AUTHORITY BY ANY OTHER GRAPHIC OR DIGITAL FORM OF THE PLAT, WHETHER GRAPHIC OR DIGITAL. THERE MAY BE ADDITIONAL RESTRICTIONS NOT RECORDED ON THIS PLAT THAT MAY BE FOUND IN THE PUBLIC RECORDS OF DUVAL COUNTY, FLORIDA.
- CERTAIN EASEMENTS ARE RESERVED FOR JEA FOR USE IN CONJUNCTION WITH THE UNDERGROUND DISTRIBUTION SYSTEM.
- "JEA E.E." DENOTES JEA EQUIPMENT EASEMENT. THESE EASEMENTS SHALL REMAIN TOTALLY UNOBSTRUCTED BY ANY IMPROVEMENTS THAT MAY IMPEDE THE USE AND ACCESS OF SAID EASEMENT BY JEA.
- "JEA E." DENOTES JEA EASEMENT. JEA WILL ALLOW CERTAIN NON-PERMANENT IMPROVEMENTS WHICH DO NOT IMPEDE THE USE OF SAID EASEMENTS BY JEA. THE INSTALLATION OF FENCES, HEDGES, AND LANDSCAPING IS PERMISSIBLE BUT SUBJECT TO REMOVAL BY JEA AT THE EXPENSE OF EACH LOT OWNER FOR THE REMOVAL AND FOR REPLACEMENT OF SUCH ITEMS.
- (100.00') DENOTES DISTANCE TO EASEMENTS OR VEGETATED NATURAL BUFFERS.
- THE LANDS DESCRIBED HEREON LIE WITHIN FLOOD ZONE "X" AND SPECIAL FLOOD HAZARD AREA AREA "AE" AS DEPICTED ON THE FLOOD INSURANCE RATE MAP COMMUNITY NUMBER 120077, PANEL NUMBER 00157, SUFFIX "E".

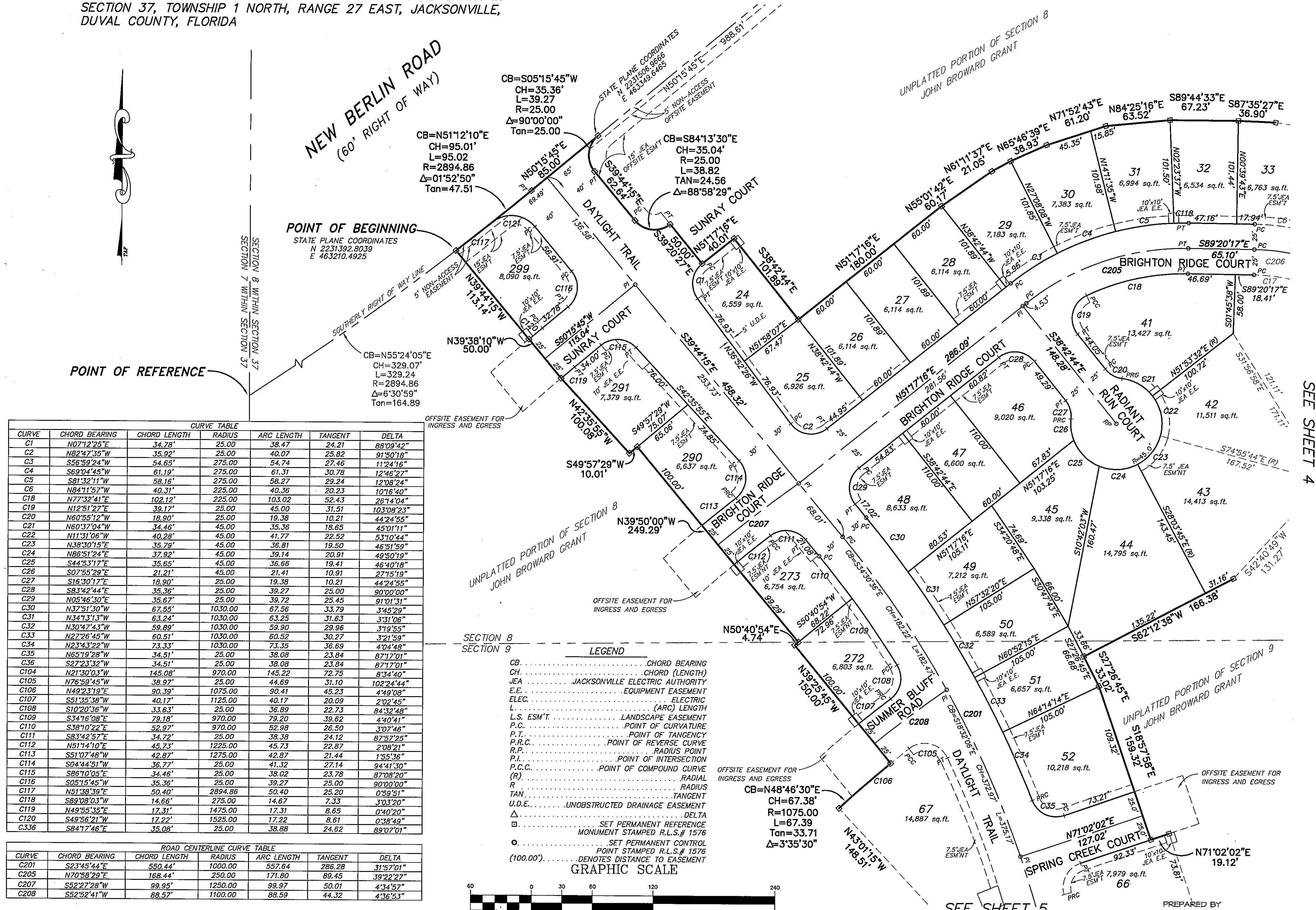


PREPARED BY  
**CHARLES BASSETT & ASSOCIATES, INC.**  
200 CENTURY 21 DRIVE JACKSONVILLE, FLORIDA 32216  
PHONE NO. (904) 724-4433

# DAYBREAK WOODS PHASE I

(SEE SHEET 2 FOR GENERAL NOTES)

A PART OF SECTIONS 8 AND 9 OF THE JOHN BROWARD GRANT IN SECTION 37, TOWNSHIP 1 NORTH, RANGE 27 EAST, JACKSONVILLE, DUVAL COUNTY, FLORIDA



CURVE TABLE						
CURVE	CHORD BEARING	CHORD LENGTH	RADIUS	ARC LENGTH	TANGENT	DELTA
C1	N07°12'25"E	34.78'	25.00	38.47	24.21	88°09'42"
C2	N82°47'35"W	35.92'	25.00	40.07	25.82	91°50'18"
C3	S56°59'24"W	54.65'	275.00	54.74	27.46	11°24'16"
C4	S69°04'45"W	61.19'	275.00	61.31	30.78	12°46'27"
C5	S81°32'11"W	58.16'	275.00	58.27	29.24	12°08'24"
C6	N84°11'57"W	40.31'	225.00	40.36	20.23	10°16'40"
C18	N77°32'41"E	102.12'	225.00	103.02	52.43	26°14'04"
C19	N12°51'27"E	39.17'	25.00	45.00	31.51	103°08'23"
C20	N60°55'12"W	18.90'	25.00	19.38	10.21	44°24'55"
C21	N60°37'04"W	34.46'	45.00	35.36	18.65	45°01'11"
C22	N11°31'06"W	40.28'	45.00	41.77	22.52	53°10'44"
C23	N38°30'15"E	35.79'	45.00	36.81	19.50	46°51'59"
C24	N86°51'24"E	37.92'	45.00	39.14	20.91	49°50'19"
C25	S44°53'17"E	35.65'	45.00	36.66	19.41	46°40'18"
C26	S07°55'29"E	21.21'	45.00	21.41	10.91	27°15'19"
C27	S16°30'17"E	18.90'	25.00	19.38	10.21	44°24'55"
C28	S83°42'44"E	35.36'	25.00	39.27	25.00	90°00'00"
C29	N05°46'30"E	35.67'	25.00	39.72	25.45	91°01'31"
C30	N37°51'30"W	67.55'	1030.00	67.56	33.79	3°45'29"
C31	N34°13'13"W	63.24'	1030.00	63.25	31.63	3°31'06"
C32	N30°47'43"W	59.89'	1030.00	59.90	29.96	3°19'55"
C33	N27°26'45"W	60.51'	1030.00	60.52	30.27	3°21'59"
C34	N23°43'22"W	73.33'	1030.00	73.35	36.69	4°04'48"
C35	N65°19'28"W	34.51'	25.00	38.08	23.84	87°17'01"
C36	S27°23'32"W	34.51'	25.00	38.08	23.84	87°17'01"
C104	N21°30'03"W	145.08'	970.00	145.22	72.75	8°34'40"
C105	N76°59'45"W	38.97'	25.00	44.69	31.10	102°24'44"
C106	N49°23'19"E	90.39'	1075.00	90.41	45.23	4°49'08"
C107	S51°35'38"W	40.17'	1125.00	40.17	20.09	2°02'45"
C108	S10°20'36"W	33.63'	25.00	36.89	22.73	84°32'48"
C109	S34°16'08"W	79.18'	970.00	79.20	39.62	4°40'41"
C110	S38°10'22"E	52.97'	970.00	52.98	26.50	3°07'46"
C111	S83°42'57"E	34.72'	25.00	38.38	24.12	87°57'25"
C112	N51°14'10"E	45.73'	1225.00	45.73	22.87	2°08'21"
C113	S51°07'48"W	42.87'	1275.00	42.87	21.44	1°55'36"
C114	S04°44'51"W	36.77'	25.00	41.32	27.14	94°41'30"
C115	S86°10'05"E	34.46'	25.00	38.02	23.78	87°08'20"
C116	S05°15'45"W	35.36'	25.00	39.27	25.00	90°00'00"
C117	N51°38'39"E	50.40'	2894.86	50.40	25.20	0°59'51"
C118	S89°08'03"W	14.66'	275.00	14.67	7.33	3°03'20"
C119	N49°55'35"E	17.31'	1475.00	17.31	8.65	0°40'20"
C120	S49°56'21"W	17.22'	1525.00	17.22	8.61	0°38'49"
C336	S84°17'46"E	35.08'	25.00	38.88	24.62	89°07'01"

ROAD CENTERLINE CURVE TABLE						
CURVE	CHORD BEARING	CHORD LENGTH	RADIUS	ARC LENGTH	TANGENT	DELTA
C201	S23°45'44"E	550.44'	1000.00	557.64	286.28	31°57'01"
C205	N70°58'29"E	168.44'	250.00	171.80	89.45	39°22'27"
C207	S52°27'28"W	99.95'	1250.00	99.97	50.01	4°34'57"
C208	S52°52'41"W	88.57'	1100.00	88.59	44.32	4°36'53"

**LEGEND**

- CB..... CHORD BEARING
- CH..... CHORD LENGTH
- JEA..... JACKSONVILLE ELECTRIC AUTHORITY
- E.E..... EQUIPMENT EASEMENT
- ELEC..... ELECTRIC
- L..... (ARC) LENGTH
- L.S. ESM'T..... LANDSCAPE EASEMENT
- P.C..... POINT OF CURVATURE
- P.T..... POINT OF TANGENCY
- P.R.C..... POINT OF REVERSE CURVE
- R.P..... RADIUS POINT
- P.I..... POINT OF INTERSECTION
- P.C.C..... POINT OF COMPOUND CURVE
- R..... RADIAL
- R..... RADIUS
- TAN..... TANGENT
- U.D.E..... UNOBSTRUCTED DRAINAGE EASEMENT
- Δ..... DELTA
- ..... SET PERMANENT REFERENCE MONUMENT STAMPED R.L.S.# 1576
- ..... SET PERMANENT CONTROL POINT STAMPED R.L.S.# 1576 (100.00')..... DENOTES DISTANCE TO EASEMENT

**GRAPHIC SCALE**

( IN FEET )  
1 inch = 60 ft.

SEE SHEET 4

SEE SHEET 5

PREPARED BY  
**CHARLES BASSETT & ASSOCIATES, INC.**  
200 CENTURY 21 DRIVE JACKSONVILLE, FLORIDA 32216  
PHONE NO. (904) 724 - 4433

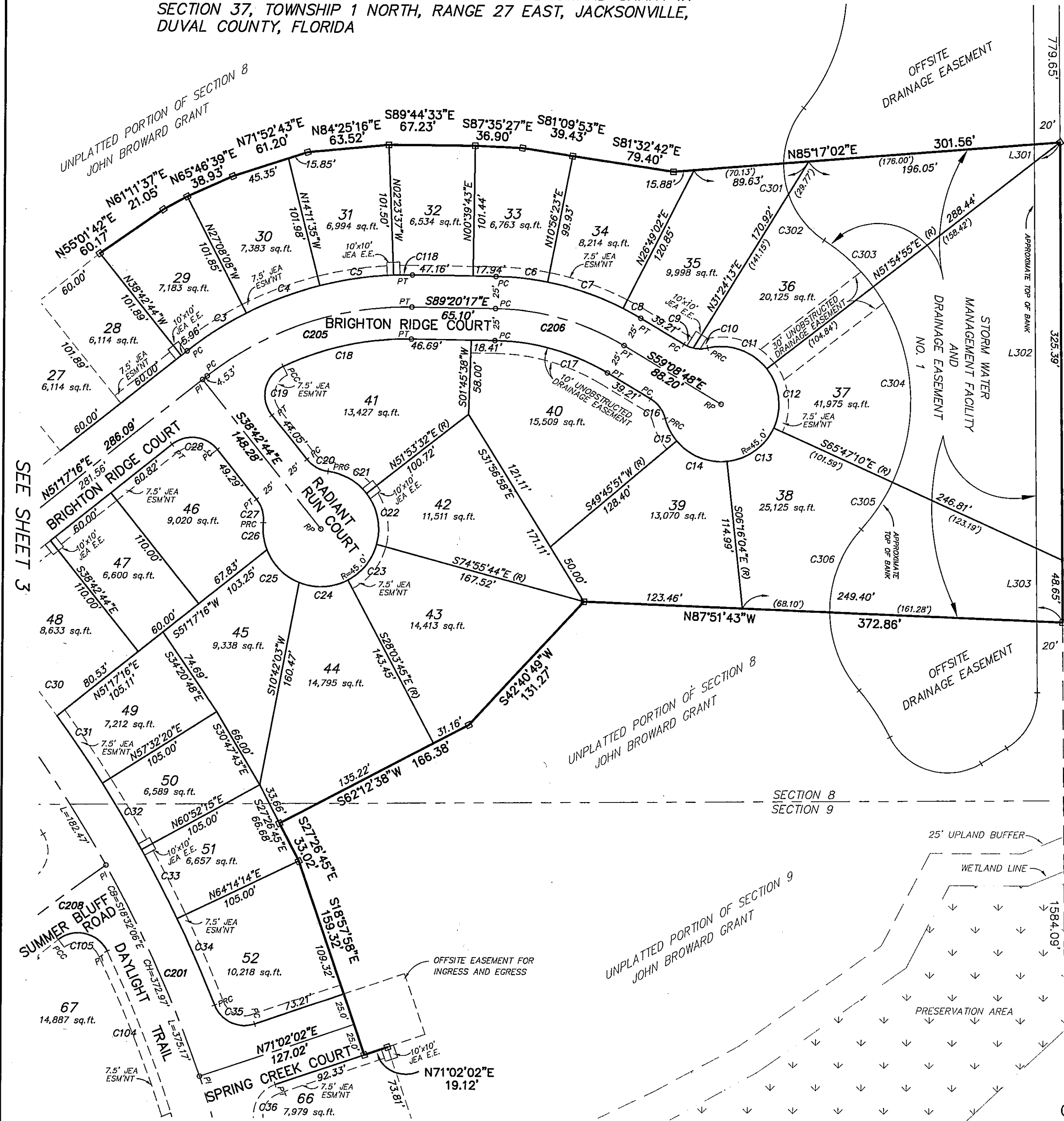
# DAYBREAK WOODS PHASE I

A PART OF SECTIONS 8 AND 9 OF THE JOHN BROWARD GRANT IN SECTION 37, TOWNSHIP 1 NORTH, RANGE 27 EAST, JACKSONVILLE, DUVAL COUNTY, FLORIDA

PLAT BOOK 55 PAGE 166

SHEET 4 OF 6 SHEETS

(SEE SHEET 2 FOR GENERAL NOTES)



CURVE	CHORD BEARING	CHORD LENGTH	RADIUS	ARC LENGTH	TANGENT	DELTA
C3	S56°59'24"W	54.65'	275.00	54.74	27.46	11°24'16"
C4	S69°04'45"W	61.19'	275.00	61.31	30.78	12°46'27"
C5	S81°32'11"W	58.16'	275.00	58.27	29.24	12°08'24"
C6	N84°11'57"W	40.31'	225.00	40.36	20.23	10°16'40"
C7	N71°07'17"W	62.15'	225.00	62.35	31.38	15°52'39"
C8	N61°09'53"W	15.85'	225.00	15.85	7.93	4°02'10"
C9	N68°07'37"W	7.80'	25.00	7.84	3.95	1°52'39"
C10	S89°39'55"W	11.44'	25.00	11.54	5.88	26°27'16"
C11	N70°49'24"W	48.67'	45.00	51.43	28.93	65°28'39"
C12	N06°56'07"W	46.55'	45.00	48.93	27.20	62°17'55"
C13	N53°58'23"E	44.67'	45.00	46.75	25.73	59°31'06"
C14	S68°15'06"E	42.27'	45.00	44.01	23.94	56°01'55"
C15	S27°29'01"E	19.87'	45.00	20.03	10.18	25°30'16"
C16	S36°56'20"E	18.90'	25.00	19.38	10.21	44°24'55"
C17	S74°14'33"E	91.15'	175.00	92.21	47.20	30°11'29"
C18	N77°32'41"E	102.12'	225.00	103.02	52.43	26°14'04"
C19	N12°51'27"E	39.17'	25.00	45.00	31.51	103°08'23"
C20	N60°55'12"W	18.90'	25.00	19.38	10.21	44°24'55"
C21	N60°37'04"W	34.46'	45.00	35.36	18.65	45°01'11"
C22	N11°31'06"W	40.28'	45.00	41.77	22.52	53°10'44"
C23	N38°30'15"E	35.79'	45.00	36.81	19.50	46°51'59"
C24	N86°51'24"E	37.92'	45.00	39.14	20.91	49°50'19"
C25	S44°53'17"E	35.65'	45.00	36.66	19.41	46°40'18"
C26	S07°55'29"E	21.21'	45.00	21.41	10.91	27°15'19"
C27	S16°30'17"E	18.90'	25.00	19.38	10.21	44°24'55"
C28	S83°42'44"E	35.36'	25.00	39.27	25.00	90°00'00"
C30	N37°51'30"W	67.55'	1030.00	67.56	33.79	3°45'29"
C31	N34°13'13"W	63.24'	1030.00	63.25	31.63	3°31'06"
C32	N30°47'43"W	59.89'	1030.00	59.90	29.96	3°19'56"
C33	N27°26'45"W	60.51'	1030.00	60.52	30.27	3°21'59"
C34	N23°43'22"W	73.33'	1030.00	73.35	36.69	4°04'48"
C35	N65°19'28"W	34.51'	25.00	38.08	23.84	87°17'01"
C36	S27°23'32"W	34.51'	25.00	38.08	23.84	87°17'01"
C104	N21°30'03"W	145.08'	970.00	145.22	72.75	8°34'40"
C105	N76°59'45"W	38.97'	25.00	44.69	31.10	102°24'44"
C118	S89°08'03"W	14.66'	275.00	14.67	7.33	3°03'20"

CURVE	CHORD BEARING	CHORD LENGTH	RADIUS	ARC LENGTH	TANGENT	DELTA
C201	S23°45'44"E	550.44'	1000.00	557.64	286.28	31°57'01"
C205	N70°58'29"E	168.44'	250.00	171.80	89.45	39°22'27"
C206	S74°14'33"E	104.17'	200.00	105.39	53.95	30°11'29"
C208	S52°52'41"W	88.57'	1100.00	88.59	44.32	4°36'53"

CURVE	CHORD BEARING	CHORD LENGTH	RADIUS	ARC LENGTH	TANGENT	DELTA
C301	N09°21'50"W	24.12'	70.00	24.24	12.25	19°50'41"
C302	N38°08'27"W	45.17'	70.00	45.99	23.88	37°38'33"
C303	N48°46'59"W	52.85'	150.00	53.12	26.84	20°17'28"
C304	N05°53'38"W	153.36'	150.00	160.97	89.22	61°29'14"
C305	N33°18'29"E	43.95'	150.00	44.11	22.22	16°50'59"
C306	N20°23'42"E	69.03'	95.00	70.65	37.05	42°36'34"

LINE	BEARING	LENGTH
L301	S00°38'57"E	13.89
L302	S00°38'57"E	300.81
L303	S00°38'57"E	56.95



PREPARED BY  
**CHARLES BASSETT & ASSOCIATES, INC.**  
200 CENTURY 21 DRIVE JACKSONVILLE, FLORIDA 32216  
PHONE NO. (904) T24 - 9433

# DAYBREAK WOODS PHASE I

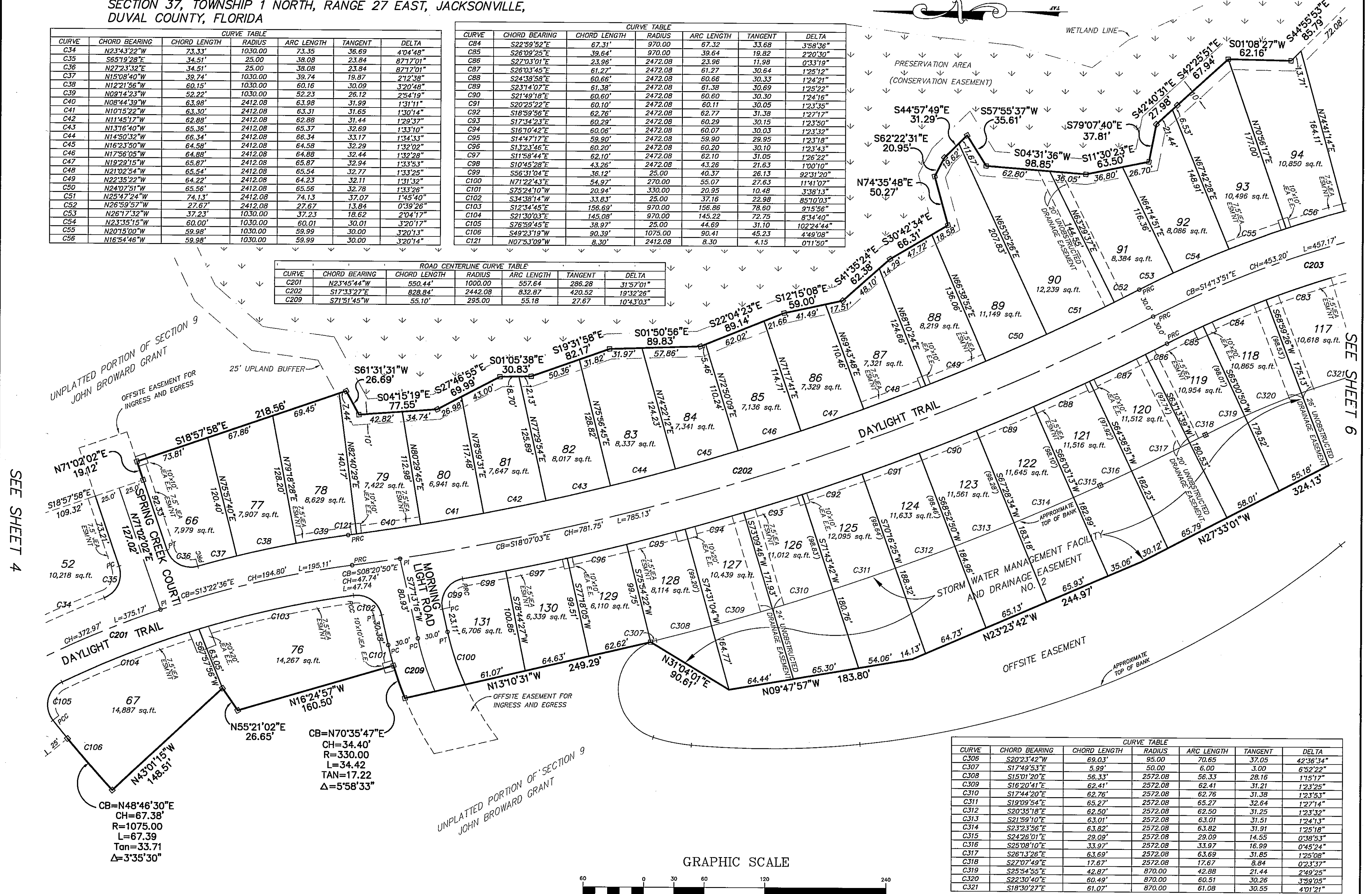
(SEE SHEET 2 FOR GENERAL NOTES)

A PART OF SECTIONS 8 AND 9 OF THE JOHN BROWARD GRANT IN SECTION 37, TOWNSHIP 1 NORTH, RANGE 27 EAST, JACKSONVILLE, DUVAL COUNTY, FLORIDA

CURVE	CHORD BEARING	CHORD LENGTH	RADIUS	ARC LENGTH	TANGENT	DELTA
C34	N23°43'22"W	73.33'	1030.00	73.35'	36.69	40°44'48"
C35	S65°19'28"E	34.51'	25.00	38.08	23.84	87°17'01"
C36	N27°23'32"E	34.51'	25.00	38.08	23.84	87°17'01"
C37	N15°08'40"W	39.74'	1030.00	39.74'	18.87	2°12'38"
C38	N12°21'56"W	60.15'	1030.00	60.16'	30.09	3°20'48"
C39	N08°14'23"W	52.22'	1030.00	52.23'	26.12	2°54'19"
C40	N08°44'39"W	63.98'	2412.08	63.98'	31.99	1°31'11"
C41	N10°15'22"W	63.30'	2412.08	63.31'	31.65	1°30'14"
C42	N11°45'17"W	62.88'	2412.08	62.88'	31.44	1°29'37"
C43	N13°16'40"W	65.36'	2412.08	65.37'	32.69	1°33'10"
C44	N14°50'32"W	66.34'	2412.08	66.34'	33.17	1°34'33"
C45	N16°23'50"W	64.58'	2412.08	64.58'	32.29	1°32'02"
C46	N17°56'05"W	64.88'	2412.08	64.88'	32.44	1°32'28"
C47	N19°29'15"W	65.87'	2412.08	65.87'	32.94	1°33'53"
C48	N21°02'54"W	65.54'	2412.08	65.54'	32.77	1°33'25"
C49	N22°35'22"W	64.22'	2412.08	64.23'	32.11	1°31'32"
C50	N24°07'51"W	65.56'	2412.08	65.56'	32.78	1°33'28"
C51	N25°47'24"W	74.13'	2412.08	74.13'	37.07	1°45'40"
C52	N26°59'57"W	72.67'	2412.08	72.67'	35.84	1°43'26"
C53	N26°17'32"W	37.23'	1030.00	37.23'	18.62	2°04'17"
C54	N23°35'15"W	60.00'	1030.00	60.01'	30.01	3°20'17"
C55	N20°15'00"W	59.98'	1030.00	59.99'	30.00	3°20'13"
C56	N16°54'46"W	59.98'	1030.00	59.99'	30.00	3°20'14"

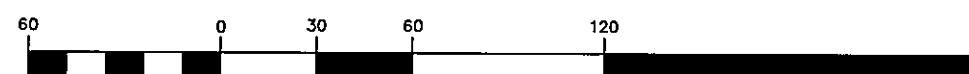
CURVE	CHORD BEARING	CHORD LENGTH	RADIUS	ARC LENGTH	TANGENT	DELTA
C84	S22°59'52"E	67.31'	970.00	67.32'	33.68	3°58'36"
C85	S26°09'25"E	39.64'	970.00	39.64'	19.82	2°20'30"
C86	S27°03'01"E	23.96'	2472.08	23.96'	11.98	0°33'19"
C87	S28°33'45"E	61.27'	2472.08	61.27'	30.64	1°24'21"
C88	S24°39'58"E	60.66'	2472.08	60.66'	30.33	1°25'22"
C89	S23°47'07"E	61.38'	2472.08	61.38'	30.68	1°24'16"
C90	S21°49'18"E	60.60'	2472.08	60.60'	30.30	1°23'16"
C91	S20°25'22"E	60.10'	2472.08	60.10'	30.05	1°23'35"
C92	S18°59'56"E	62.76'	2472.08	62.77'	31.38	1°27'17"
C93	S17°34'23"E	60.29'	2472.08	60.29'	30.15	1°23'50"
C94	S16°10'42"E	60.06'	2472.08	60.07'	30.03	1°23'32"
C95	S14°47'17"E	59.90'	2472.08	59.90'	29.95	1°23'18"
C96	S13°23'46"E	60.20'	2472.08	60.20'	30.10	1°23'43"
C97	S11°58'44"E	62.10'	2472.08	62.10'	31.05	1°26'22"
C98	S10°45'28"E	43.26'	2472.08	43.26'	21.63	1°00'10"
C99	S56°31'04"E	36.12'	25.00	40.37'	26.13	1°26'22"
C100	N71°22'43"E	54.97'	270.00	55.07'	27.63	11°41'07"
C101	S75°24'10"W	20.94'	330.00	20.95'	10.48	3°38'13"
C102	S34°38'14"W	33.83'	25.00	37.16'	22.98	85°10'03"
C103	S12°34'45"E	156.69'	970.00	156.69'	78.60	1°23'18"
C104	S21°30'03"E	145.08'	970.00	145.22'	72.75	8°34'30"
C105	S78°59'45"E	38.97'	25.00	44.69'	31.10	102°24'44"
C106	S49°23'19"W	90.39'	1075.00	90.41'	45.23	4°49'08"
C121	N07°53'09"W	8.30'	2412.08	8.30'	4.15	0°11'50"

CURVE	CHORD BEARING	CHORD LENGTH	RADIUS	ARC LENGTH	TANGENT	DELTA
C201	N23°45'44"W	550.44'	1000.00	557.64'	286.28	31°57'01"
C202	S17°33'27"E	828.84'	2442.08	832.87'	420.52	19°32'26"
C209	S71°51'45"W	55.10'	295.00	55.18'	27.67	10°43'03"



CURVE	CHORD BEARING	CHORD LENGTH	RADIUS	ARC LENGTH	TANGENT	DELTA
C306	S20°23'42"W	69.03'	95.00	70.65'	37.05	42°56'34"
C307	S17°49'53"E	5.99'	50.00	6.00'	3.00	6°52'22"
C308	S15°01'20"E	56.33'	2572.08	56.33'	28.16	1°15'17"
C309	S16°20'41"E	62.41'	2572.08	62.41'	31.21	1°23'26"
C310	S17°44'20"E	62.76'	2572.08	62.76'	31.38	1°23'53"
C311	S19°09'54"E	65.27'	2572.08	65.27'	32.64	1°27'14"
C312	S20°35'18"E	62.50'	2572.08	62.50'	31.25	1°23'32"
C313	S21°59'10"E	63.01'	2572.08	63.01'	31.51	1°24'13"
C314	S23°23'56"E	63.82'	2572.08	63.82'	31.91	1°25'18"
C315	S24°26'01"E	29.09'	2572.08	29.09'	14.55	0°38'53"
C316	S25°08'10"E	33.97'	2572.08	33.97'	16.99	0°45'24"
C317	S26°13'26"E	63.69'	2572.08	63.69'	31.85	1°25'08"
C318	S27°07'49"E	17.67'	2572.08	17.67'	8.84	0°23'37"
C319	S25°54'55"E	42.87'	870.00	42.88'	21.44	2°49'25"
C320	S22°30'40"E	60.49'	870.00	60.51'	30.26	3°59'05"
C321	S18°30'27"E	61.07'	870.00	61.08'	30.55	4°01'21"

GRAPHIC SCALE



( IN FEET )  
1 inch = 60 ft.

PREPARED BY  
**CHARLES BASSETT & ASSOCIATES, INC.**  
200 CENTURY 21 DRIVE JACKSONVILLE, FLORIDA 32216  
PHONE NO. (904) 724 - 4433

# DAYBREAK WOODS PHASE I

A PART OF SECTIONS 8 AND 9 OF THE JOHN BROWARD GRANT IN SECTION 37, TOWNSHIP 1 NORTH, RANGE 27 EAST, JACKSONVILLE, DUVAL COUNTY, FLORIDA

PLAT BOOK 55 PAGE 16E

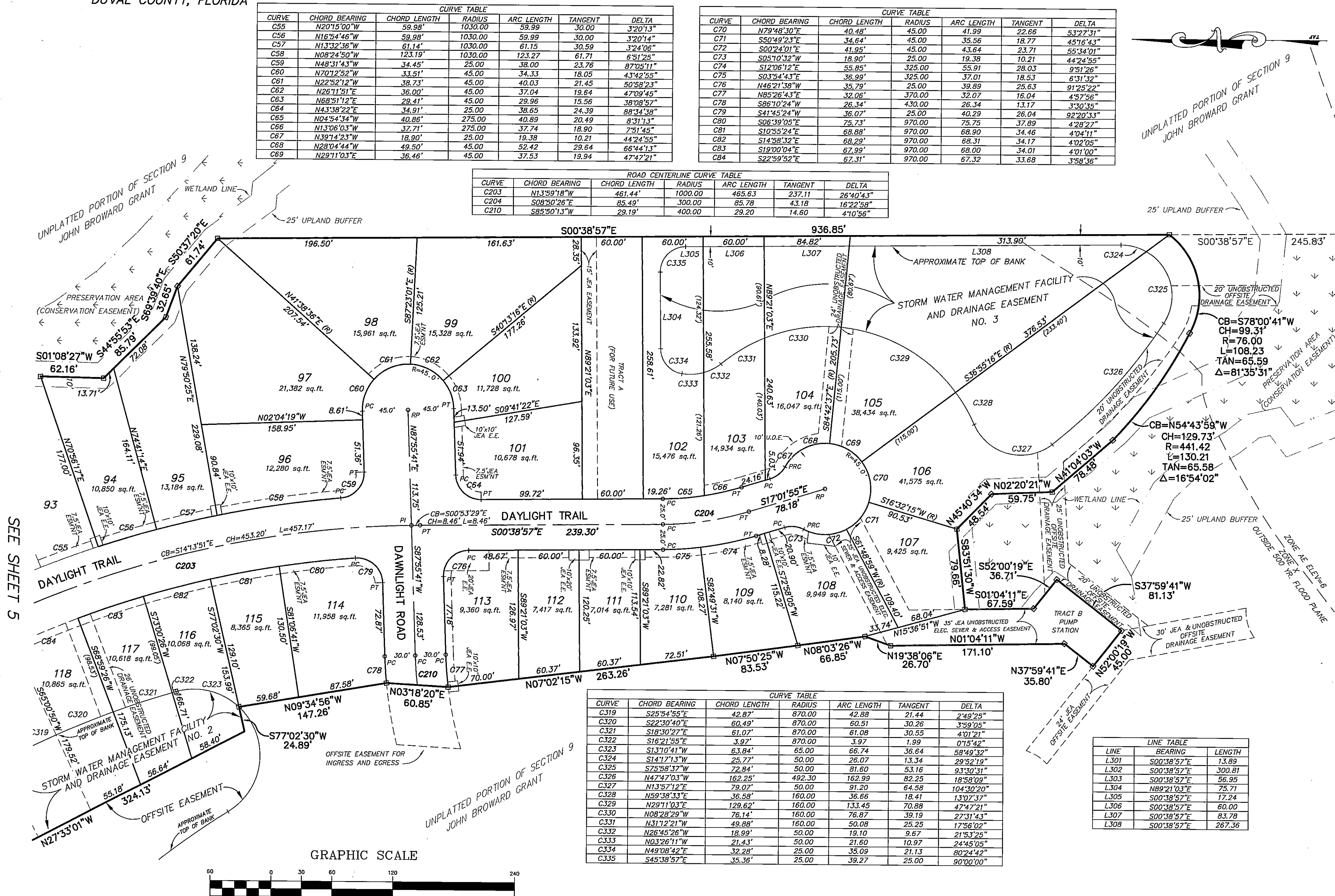
SHEET 6 OF 6 SHEETS

(SEE SHEET 2 FOR GENERAL NOTES)

CURVE TABLE						
CURVE	CHORD BEARING	CHORD LENGTH	RADIUS	ARC LENGTH	TANGENT	DELTA
C55	N20°15'00"W	59.98'	1030.00	59.99	30.00	3°20'13"
C56	N16°54'46"W	59.98'	1030.00	59.99	30.00	3°20'14"
C57	N13°32'36"W	61.14'	1030.00	61.15	30.59	3°24'06"
C58	N08°24'50"W	123.19'	1030.00	123.27	61.71	6°51'25"
C59	N48°31'43"W	34.45'	25.00	38.00	23.76	87°05'11"
C60	N70°12'52"W	33.51'	45.00	34.33	18.05	43°42'55"
C61	N22°52'12"W	38.73'	45.00	40.03	21.45	50°58'23"
C62	N26°11'51"E	36.00'	45.00	37.04	19.64	47°09'45"
C63	N68°51'12"E	29.41'	45.00	29.96	15.56	38°08'57"
C64	N43°38'22"E	34.91'	25.00	38.65	24.39	88°34'38"
C65	N04°54'34"W	40.86'	275.00	40.89	20.49	8°31'13"
C66	N13°06'03"W	37.71'	275.00	37.74	18.90	7°51'45"
C67	N39°14'23"W	18.90'	25.00	19.38	10.21	44°24'55"
C68	N28°04'44"W	49.50'	45.00	52.42	29.64	66°44'13"
C69	N29°11'03"E	36.46'	45.00	37.53	19.94	47°47'21"

CURVE TABLE						
CURVE	CHORD BEARING	CHORD LENGTH	RADIUS	ARC LENGTH	TANGENT	DELTA
C70	N79°48'30"E	40.48'	45.00	41.99	22.66	53°27'31"
C71	S50°49'23"E	34.64'	45.00	35.56	18.77	45°16'43"
C72	S00°24'01"E	41.95'	45.00	43.64	23.71	55°34'01"
C73	S05°10'32"W	18.90'	25.00	19.38	10.21	44°24'55"
C74	S12°06'12"E	55.85'	325.00	55.91	28.03	9°51'26"
C75	S03°54'43"E	36.99'	325.00	37.01	18.53	6°31'32"
C76	N46°21'38"W	35.79'	25.00	39.89	25.63	91°25'22"
C77	N85°26'43"E	32.06'	370.00	32.07	16.04	4°57'56"
C78	S86°10'24"W	26.34'	430.00	26.34	13.17	3°30'35"
C79	S41°45'24"W	36.07'	25.00	40.29	26.04	92°20'33"
C80	S06°39'05"E	75.73'	970.00	75.75	37.89	4°28'27"
C81	S10°55'24"E	68.89'	970.00	68.90	34.46	4°04'11"
C82	S14°58'32"E	68.29'	970.00	68.31	34.17	4°02'05"
C83	S19°00'04"E	67.99'	970.00	68.00	34.01	4°01'00"
C84	S22°59'52"E	67.31'	970.00	67.32	33.68	3°58'36"

ROAD CENTERLINE CURVE TABLE						
CURVE	CHORD BEARING	CHORD LENGTH	RADIUS	ARC LENGTH	TANGENT	DELTA
C203	N13°59'18"W	461.44'	1000.00	465.63	237.11	26°40'43"
C204	S08°50'26"E	85.49'	300.00	85.78	43.18	16°22'58"
C210	S85°50'13"W	29.19'	400.00	29.20	14.60	4°10'56"

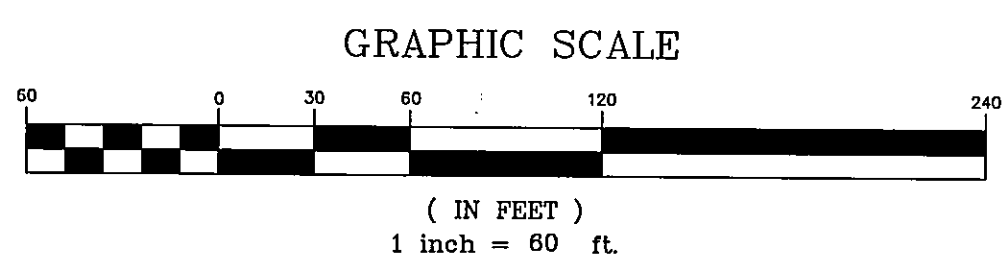


UNPLATTED PORTION OF SECTION 9  
JOHN BROWARD GRANT

SEE SHEET 5

CURVE TABLE						
CURVE	CHORD BEARING	CHORD LENGTH	RADIUS	ARC LENGTH	TANGENT	DELTA
C319	S25°54'55"E	42.87'	870.00	42.88	21.44	2°49'25"
C320	S22°30'40"E	60.49'	870.00	60.51	30.26	3°59'05"
C321	S18°30'27"E	61.07'	870.00	61.08	30.55	4°01'21"
C322	S16°21'55"E	3.97'	870.00	3.97	1.99	0°15'42"
C323	S13°10'41"W	63.84'	65.00	66.74	36.64	58°49'32"
C324	S14°17'13"W	25.77'	50.00	26.07	13.34	29°52'19"
C325	S75°58'37"W	72.84'	50.00	81.60	53.16	93°30'31"
C326	N47°47'03"W	162.25'	492.30	162.99	82.25	18°58'09"
C327	N13°57'12"E	79.07'	50.00	91.20	64.58	104°30'20"
C328	N59°38'33"E	36.58'	160.00	36.66	18.41	13°07'37"
C329	N29°11'03"E	129.62'	160.00	133.45	70.88	47°47'21"
C330	N08°28'29"W	76.14'	160.00	76.87	39.19	27°31'43"
C331	N31°12'21"W	49.88'	160.00	50.08	25.25	17°56'02"
C332	N26°45'26"W	18.99'	50.00	19.10	9.67	21°53'25"
C333	N03°26'11"W	21.43'	50.00	21.60	10.97	24°45'05"
C334	N49°08'42"E	32.28'	25.00	35.09	21.13	80°24'42"
C335	S45°38'57"E	35.36'	25.00	39.27	25.00	90°00'00"

LINE TABLE		
LINE	BEARING	LENGTH
L301	S00°38'57"E	13.89
L302	S00°38'57"E	300.81
L303	S00°38'57"E	56.95
L304	N89°21'03"E	75.71
L305	S00°38'57"E	17.24
L306	S00°38'57"E	60.00
L307	S00°38'57"E	83.78
L308	S00°38'57"E	267.36



PREPARED BY  
**CHARLES BASSETT & ASSOCIATES, INC.**  
200 CENTURY 21 DRIVE JACKSONVILLE, FLORIDA 32216  
PHONE NO. (904) 724-4433